



R+4

T3

A405

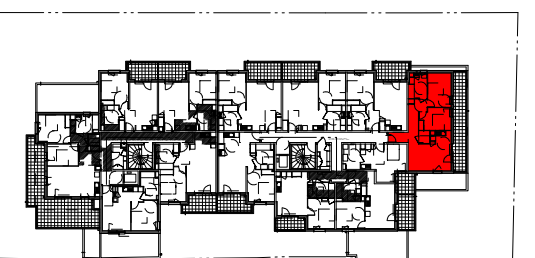
Tableau des surfaces habitables

Entrée	3.00m ²
Séjour / Cuisine	21.28m ²
Dégagement + Placard	6.22m ²
Chambre 1 + Placard	9.73m ²
Chambre 2	11.44m ²
S.D.B.	6.33m ²
WC	1.99m ²

Surface habitable Totale 59.99m²

Balcon 17.83m²

Surface Totale 77.82m²



Date:12/10/2021

ECHELLE
0 1 2 3 4 5

