

R+4

T2

B401

Tableau des surfaces habitables

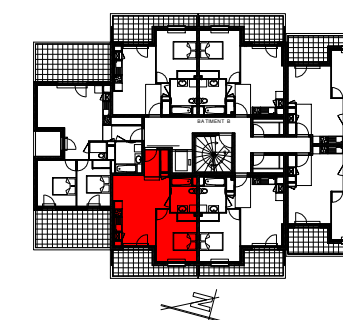
Entrée + placard	3.77m <sup>2</sup>
Séjour / Cuisine	20.91m <sup>2</sup>
S.D.B. + WC	5.69m <sup>2</sup>
Chambre + placard	12.63m <sup>2</sup>

Surface habitable Totale 43.00m<sup>2</sup>

Balcon 9.47m<sup>2</sup>

Terrasse

Surface Totale 52.47m<sup>2</sup>



Date:30/03/2022

ECHELLE  
0 1 2 3 4 5

