



R+4

T3

B402

Tableau des surfaces habitables

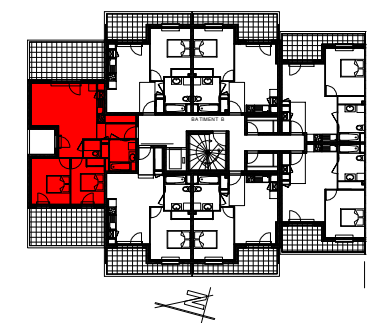
Entrée + Placard	5.38m <sup>2</sup>
Séjour / Cuisine	24.90m <sup>2</sup>
S.D.B. + Placard	5.90m <sup>2</sup>
WC	1.97m <sup>2</sup>
Chambre 1	11.36m <sup>2</sup>
Chambre 2 + placard	9.71m <sup>2</sup>

Surface habitable Totale 59.22m<sup>2</sup>

Balcon 1 11.70m<sup>2</sup>

Balcon 2 17.71m<sup>2</sup>

Surface Totale 88.63m<sup>2</sup>



Date:30/03/2022

ECHELLE  
0 1 2 3 4 5

